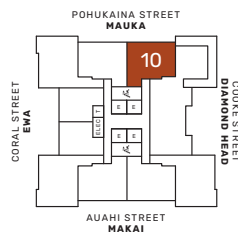
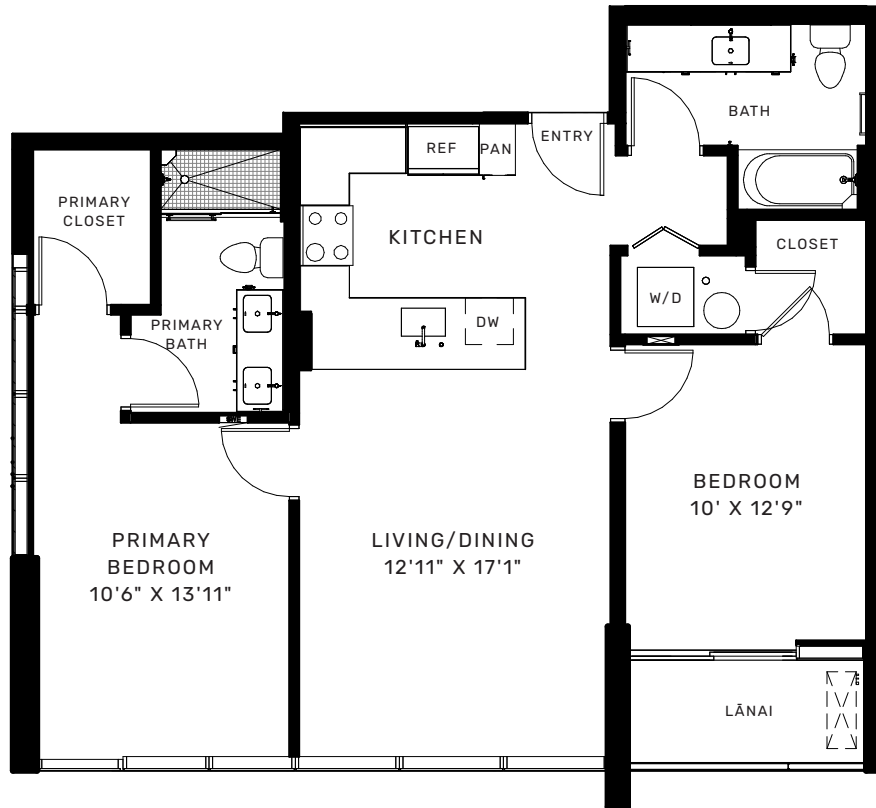


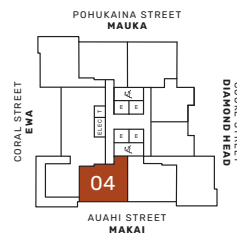


Residence 3210 and 3604 Plan A-2B.1

2 Bedroom/2 Bath Total: 944 Sq Ft Interior: 899 Sq Ft Lānai: 45 Sq Ft



Floor 32



Floor 36

KAHUINA

SALES GALLERY 1100 Alakea Street, Suite 102 Honolulu, Hawai'i 96813 808-229-3800 Live@MyKahuina.com

EXCLUSIVE PROJECT BROKERS Compass, RB-23206 Pacific Island Realty, LLC, RB-17549



DISCLAIMER: Kahuina (the "Project") is a proposed condominium project that does not yet exist, and the development concepts therefor continue to evolve and are subject to change without notice. All figures, facts, information, and prices are approximate and may change at any time. All renderings, maps, site plans, photos, views, floor plans, graphic images, drawings, and other information depicted in this brochure are illustrative only, are provided to assist the purchaser in visualizing the units and the Project, may not be accurately depicted, and are subject to change at any time. Visual depictions of the Project and units contained in this brochure are artist renderings and should not be relied upon in deciding to purchase a unit, and the developer makes no guarantee, representation, or warranty whatsoever that the Project and units depicted will ultimately appear as shown. All amenities of the Project are proposed only and are subject to change and access to any amenities may be subject to the payment of fees and other restrictions. The developer does not own or control the land outside of the Project and does not guarantee the current or future use thereof. To the extent permitted by law, the developer disclaims all liability that may arise out of errors or omissions in the content of this brochure, including claims for actual or consequential damages. This is not intended to be an offering or solicitation of sale in any jurisdiction where the Project is not registered in accordance with applicable law or where such offering or solicitation would otherwise be prohibited by law. The content of this brochure may not be copied, republished, posted, or distributed in any way. WARNING: THE CALIFORNIA DEPARTMENT OF REAL ESTATE HAS NOT INSPECTED, EXAMINED, OR QUALIFIED THIS OFFERING.



Kakaako Block C LLC, an affiliate of Stanford Carr Development, LLC

MyKahuina.com